

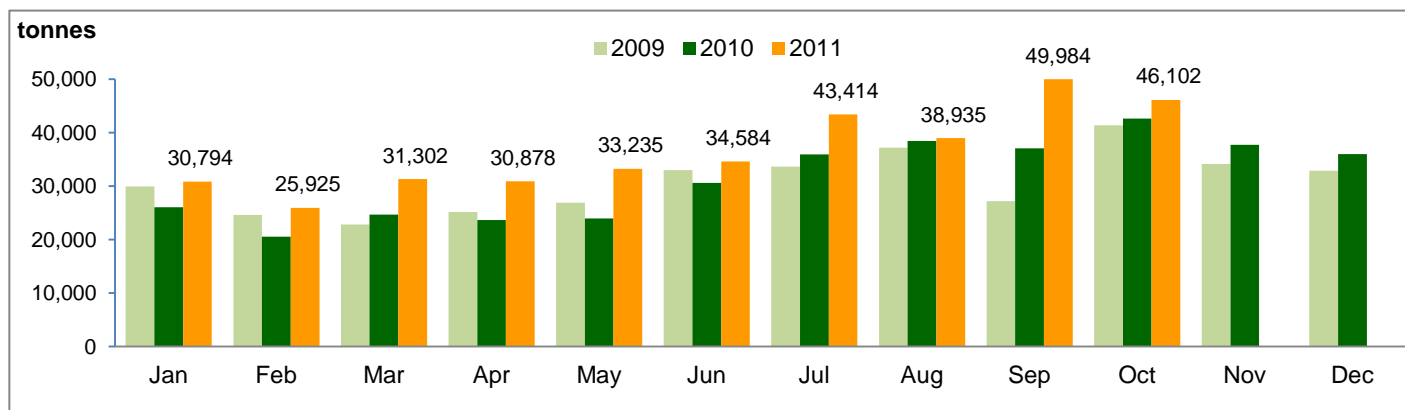


Monthly Production Highlights – October 2011

Production and Yields

		10M2011	10M2010	Change	Oct 2011	Oct 2010	Change
Production							
FFB Total	(tonnes)	1,536,528	1,279,764	20.1%	193,579	179,460	7.9%
Nucleus		1,398,197	1,170,210	19.5%	175,948	164,888	6.7%
Plasma		138,331	109,554	26.3%	17,631	14,572	21.0%
CPO	(tonnes)	365,153	303,264	20.4%	46,102	42,630	8.1%
PK	(tonnes)	83,659	68,602	21.9%	10,592	9,889	7.1%
Efficiency							
FFB Yield	(tonnes/ha)	17.9	16.3	↑	2.3	2.3	-
CPO Yield	(tonnes/ha)	4.2	3.8	↑	0.5	0.5	-
CPO Extraction Rate	(%)	23.6	23.5	↑	23.6	23.5	↑
PK Extraction Rate	(%)	5.4	5.3	↑	5.4	5.5	↓

CPO Production Trend



	Jan	Feb	Mar	Apr	May	Jun	Jul	Aug	Sep	Oct	Nov	Dec
2010	26,004	20,503	24,625	23,634	23,941	30,587	35,925	38,398	37,018	42,630	37,705	35,953
2009	29,920	24,579	22,786	25,127	26,861	32,990	33,645	37,185	27,193	41,367	34,106	32,874

Notes:

Figures may not sum due to rounding

- FFB: Fresh Fruit Bunches
- CPO: Crude Palm Oil
- PK: Palm Kernel
- Nucleus: Plantations owned by the Group
- Plasma: Plantations developed by the Group for the benefit of smallholders. The Group buys FFB from these plasma plantations at prices determined by the Indonesian government.
- Yields: FFB Yield and CPO Yield are for the reported period and not annualised